



THE HOME of HERVEY BAY ART SOCIETY

April, 2024 Newsletter

UPCOMING EVENTS

MARCH

GENERAL WORKS
INSTALLATION in by
10:30am Friday 22nd March

APRIL

'Boats, Wharves &
Marinas' monthly art
competition - Entries in by
10:30am Friday 5th APRIL.
Presentation & BBQ at Noon
Friday, 12th APRIL.

GENERAL WORKS
INSTALLATION in by
10:30am Friday 22nd APRIL

MAY

Community Connection
Exhibition –

SHARED GROUND

10th May - 7th June
Celebrating Reconciliation
Week

EOIs & Entry forms in
by noon, 26th April
Artworks in by 10:30am
Friday 3rd MAY.

Portraits & Figurative

MONTHLY COMPETITION for MARCH 2024



1ST PRIZE: HANS SIPSMA for "Alter Ego" Acrylics (Above)



2ND PRIZE: HANS SIPSMA for "Love Snorkelling" Acrylics

Wide Bay Gallery
Run by artists - for artists

- Largest Fine Art supplies north of Brisbane
- Conservation framing for artwork, sports memorabilia, embroidery and more
- Join our Art Essence Club for 10% discounts and year round specials
- Shop in person, online or by phone and have delivery to your door
- Free, friendly advice on all our products

228 Adelaide Street
Maryborough Qld
Ph: 07 41221858
E: widebaygallery.qld@gmail.com
W: artmaterialsupplies.com.au



SILVER LEVEL SPONSOR

Thank you for your support of HBAS

Members please support Bette when considering art supplies.



Portraits & Figurative

HIGHLY COMMENDED:

MARK BROSE for "Loss" Watercolour (above)

Portraits & Figurative

HIGHLY COMMENDED:

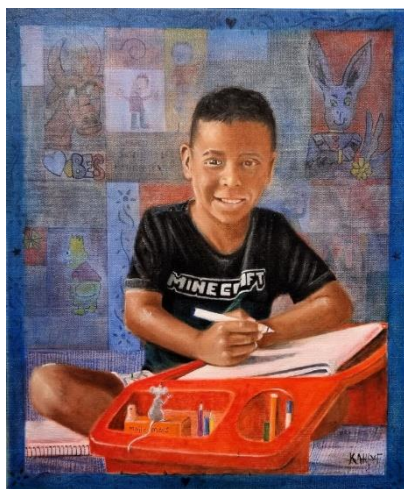
ANNELIE JORDAAN for "Mother's Love" Watercolour (above)



Portraits & Figurative

COMMENDED:

KATHERINE WALSH for "Island Girl" Acrylic (above)



Portraits & Figurative

COMMENDED:

KATHY FLUHLER for "Marseille Lambert" Oils (above)



Portraits & Figurative

ENCOURAGEMENT:

LIUDA COCKBURN for "The Youth" Pastels (above)

Portraits & Figurative

ENCOURAGEMENT:

CAROL MITCHELL for "She Rises" Acrylics (left)



PRESIDENT'S REPORT for MARCH

Our very, dear and valued member, Aspacia Poteria passed away on Friday 22nd March 2024. Our thoughts and condolences are with the family and friends at this very sad time. Aspacia welcomed new members and is remembered as a warm, caring soul with a beautiful sense of humour. She will be dearly missed by all her friends at Hervey bay Art Society.

Recently, HBAS hosted a 'Wine & Cheese' event for the Hervey Bay Chamber of Commerce. Owners and managers of local businesses came along to view our artworks and find out about Gallery 5. Each of them, bar one, had not heard of let alone visited our gallery in Sandy Street. Once again, they were all surprised by our 'Hidden Gem'. A business person offered to spread the word and promote Gallery 5 as often as possible. We also gained a couple of sponsor prospects for next financial year. Congratulations go to all the volunteers who helped with the event, especially our catering team. We had trouble getting many of the visiting Chamber of Commerce members out the door at the end of the event. More events like this will be planned for the future.

The workshop presented by notable pastellist, Lyn Diefenbach was enjoyed by attendees over two days recently. Most who attended were experienced artists but all came away with new knowledge and increased passion for pastel artworks. Each of the twelve attendees produced a fantastic artwork displaying depth in value, clever techniques for gaining texture and showing an improved command of the pastel medium. Up next, we have Chris Postle's (Contemporary Acrylics) workshop in early April. Remember that you have to pay at the gallery front desk to confirm a spot on the list for each special workshop. There are a few places left.

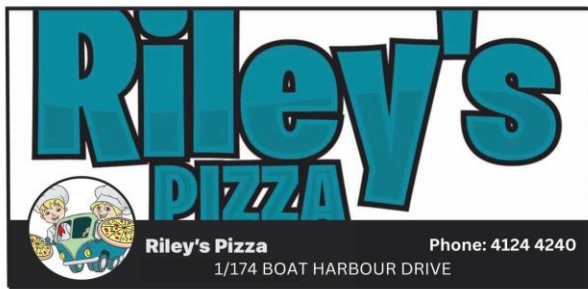
During our recent HBAS General Meeting, the need for as many members to attend as possible became apparent. Only a small number attended but a quorum was eventually reached. When attendance at general meetings is low, a small numbers of members are able to get a motion passed that may not normally pass. If you do not attend HBAS meetings, decisions can be made by the minority. Please make the effort to attend the next general meeting on the third Monday of May at 10am.

Also in May, the first of our Community Connections exhibitions will be on display. This is a collaborative effort between our First Nations Artists and our members presenting artworks relating to the topic of "Shared Ground" (with each other or with the earth). We are expecting 25 artists from each group to produce works to be installed between 10th May to 7th June. EOIs have been emailed to all HBAS and are available on the front desk. Please support this great community collaboration. Members will be notified after the EOIs are in. This is a significant opportunity to increase the awareness of our gallery's existence within our community and beyond. Remember this is your Art Society and we welcome hearing your ideas or concerns, please contact the Executive or email at herveybayartsociety@bigpond.com as the need arises. If you wish to lodge a suggestion or a complaint send it in writing to the HBAS email for the executive to investigate.



Mark Brose
HBAS President





PICTURE FRAMING

Contact Alan Muir
2/67 Main Street Pialba
PH: 4128 2911



Our long term sponsor, Alan Muir from OUT of the SQUARE Picture Framing has increased his sponsorship to \$1000 +\$50 voucher/month 'GOLD LEVEL' - Thank you!



Real Service Real Results **RealWay** www.RealWay.com.au

GOLD LEVEL SPONSOR

BASIC ART SKILLS CLASSES begin a new round a new round of classes for drawing, colour theory & and introduction to some mediums. Starts Monday 1st APRIL between 12:30-3pm - costs: \$7 for members, \$15 non-members.

DAY & TIME	SESSION	TUTOR/ CONVENOR
Monday 9am-noon	Social Art Group 1	Marianne Bayer & Shanti Rahal
Monday 12:30-3:15	BASIC ART SKILLS L1	Mark Brose 0427244242
Tuesday 9am - Noon	U3A Art Group	Weekly Booking
Tuesday 12:30 - 3pm	BEYOND BASICS L2	Mark Brose 0427244242
Wednesday 9am-noon	Social Art Group 2	Carole Rowe 0427001414
Wednesday 12:30-3:15pm	NEXT STEPS Intermediate L3	Mark Brose 0427244242
Thursday 9am-noon	Social Art Group 3	Lyn Harris 0401767127
1 st & 3 rd Thursday	Life Drawing 12:30-3:30pm	Katherine Walsh 0417999133
2 nd & 4 th Thurs	Printmaking Noon-3pm	Carol Mitchell 0407058156
Friday 9am-noon	Acrylics & Oils	Rolf Sieber 0428664290
Friday 9am-noon	Drawing Skills	Mark Brose 0427244242
EACH SESSION	\$7 for Members	\$15 for Non-members



BOATS, WHARVES & MARINAS in April

The world of boats, wharves & marinas can be quite diverse but they have one common factor - water transportation. Whether transporting cargo, people and animals, or racing for a win, it is on the water. How the water reflects and moves adds great effect to your artworks. The type of sky just as important for the subject. Think carefully about the horizon, sky colour and how the clouds might direct the eye. Remember "Value" is about 'Light' or 'Lack of Light' of which this topic has bucketloads. If you can capture 'movement', that's even better.

- ARE YOU CONSIDERING THE NEED FOR NEGATIVE SPACE?
- WHICH COMPOSITION GUIDE IS THE BASIS OF YOUR WORK THAT HELPS DIRECT THE VIEWER'S EYE?
- WHICH PARTS ARE BEST MUTED OR VAGUE AND WHICH PARTS REQUIRE DETAIL?
- HOW CAN YOU USE A COMBINATION OF HARD AND SOFT EDGES TO BEST EFFECT?
- WHICH ASPECTS OF THE REFERENCE CAN BE LEFT OUT?
- ALLOW THE VIEWER TO FILL IN DETAILS THAT YOU LEAVE OUT

LIGHT

REFLECTION

RIPPLES

SKY

HORIZON.

SHADOWS



"SHARED GROUND" Community Exhibition in MAY



The month of May contains National Reconciliation Week which creates an opportunity for our Community Connections Event for 2024. The "Shared Ground" Exhibition fits well with the topic of reconciliation. Indigenous and non-indigenous artists producing artworks that delve into the topic of shared ground with each other or with the earth. These works can be about wants or wishes, social comment or a sharing of art styles or ideas/knowledge. Twenty-five First Nations artists plus twenty-five HBAS member artists get to contribute two works each.

1. **Make your artwork speak to the viewer.** What is the message or meaning relating to the topic you wish viewers of your artwork to gain? How can you use shape, colour, position to lead the viewer's eye? Which colour scheme will suit your topic and create the impact you are looking for?



2. **Good Composition** is key to getting and keeping the viewer's attention. Whether it is the rule of thirds, the golden spiral or one of the simple shape or letter composition guides. Each technique is effective in its own way by

3. **MEDIUM or MATERIAL choice** can add significantly to making your artwork have impact or be unique. Be open to trying textures or using unusual materials or applying a medium in a different way. Cross-pollinate between the two cultures - be inventive - see what you can create.

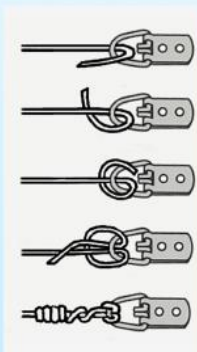




ARTWORKS READY FOR SALE =
 SEALED with TAPE + "D" Hooks + WIRE



Use **D-RINGS** big enough to hold your artwork's weight



Tie your WIRE carefully as above



Secure quality TAPE to seal the gap between frame & back



D-Rings must fit various sized hooks

UPCOMING SPECIAL WORKSHOPS

Our next Special Workshop is Chris Postle's 'Expressionist Landscapes' single day workshop on 6th April

Stay tuned for information on the following upcoming special workshops:

- Barry Back - Acrylics**
- Ben Winspear - Oils**
- Jan Lawnikanis - Watercolour**
- Lynn Munn - Pastels**

Many thanks to Kaylee Stafford and Janet Maxwell for their work co-ordinating these workshops by notable artists.

2024 MONTHLY TOPICS

- JAN - ANIMAL ATTRACTIONS
- FEB - KALEIDOSCOPE of COLOUR
- MARCH - FIGURATIVE AND PORTRAITURE
- APRIL - BOATS / WHARVES / MARINAS
- MAY - SHARED GROUND with Each Other or with the Earth (Reconciliation)
- JUNE - ABSTRACTIONS
- JULY - TREMENDOUS TREES
- AUG - STREETSCAPES
- SEPT - FABULOUS FLORALS
- OCT - SENSATIONAL SKIES
- NOV - ANNUAL MEMBERS' EXHIBITION
- DEC - MINIATURES & SMALL WORKS



40th ANNUAL COMPETITIVE ART EXHIBITION 2024

Members are invited to enter artworks into any of the six sections of this special anniversary exhibition. Entry forms are available in hardcopy from the gallery front desk or in digital form, online. Email your digital version of the entry form to herveybayartsociety@bigpond.com or bring it in to our 5 Sandy Street gallery and place it in the office door slot.



Fraser Coast

REGIONAL COUNCIL



Location
2/401 Charlton Esplanade
Torquay Hervey Bay, QLD

Phone
(07) 4194 0987

Email Address
hairdeparishb@gmail.com



GEORGE SEYMOUR



ADRIAN TANTARI
Member for Hervey Bay

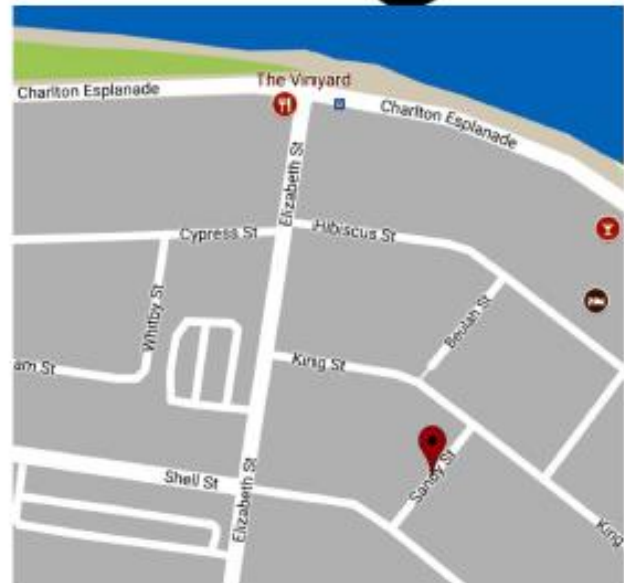


PRESENTATION & BARBEQUE

FRIDAY 12th April

Noon

Bring a gold coin so we can continue to improve the quality of what is on offer.



Hervey Bay Art Society Inc

Management Committee

President: Mark Brose 0427 244 242
Vice-President: Jill Byrnes 0418 935 257
Secretary: Jane Backhaus 0419 7854 807
Treasurer: Jacque Boyle 0417 788 460

Hervey Bay Art Society

**5 Sandy Street, Urangan,
Queensland 4655**
P.O. Box 7321, Urangan, Qld 4655
Office hours: Friday 9am to 12pm
P: (07) 4124 9200



E: herveybayartsociety@bigpond.com
W: www.herveybayartsociety.org.au